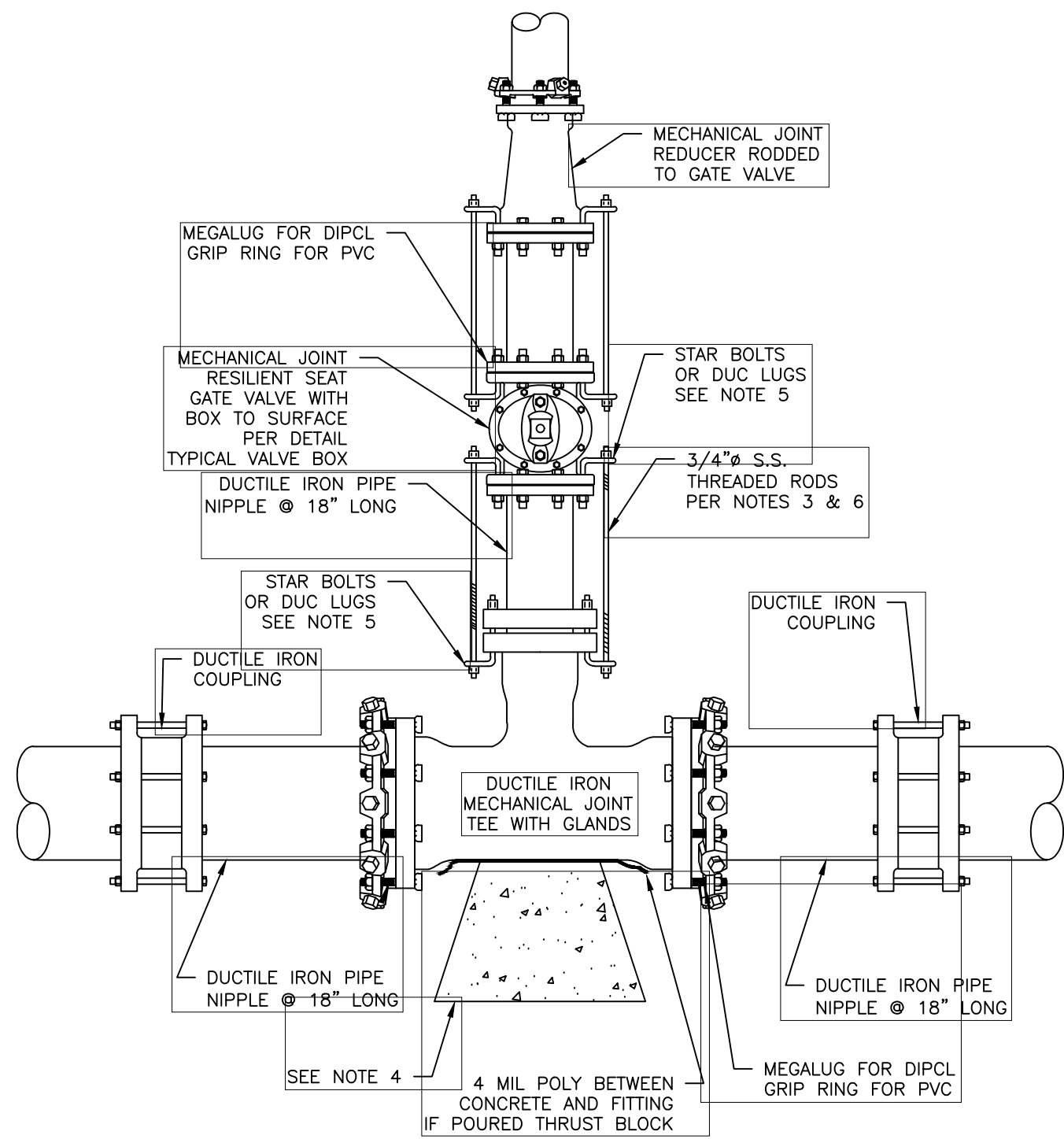


Plotted: 3/22/2023 12:09 PM By: NCS
H:\MIS\10770\10770.01\Drawings\ENG\10770U01A.dwg

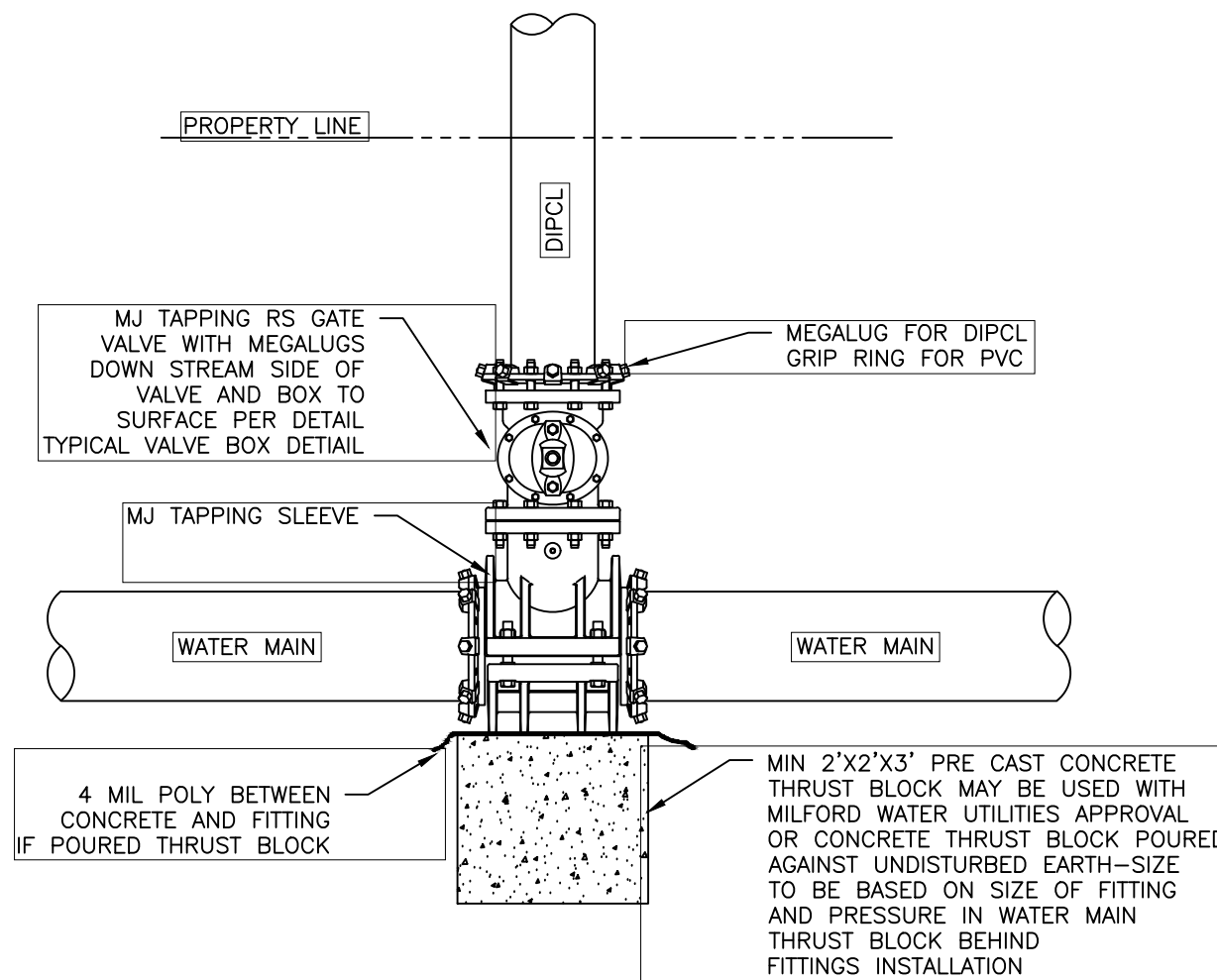


- NOTES:
1. ALL MATERIAL AND INSTALLATION PROCEDURES WILL CONFORM TO P.W.W TECHNICAL SPECIFICATIONS.
 2. ALL PIPE SHOULD HAVE A MINIMUM DEPTH OF 5' FROM TOP OF PIPE TO FINISH GRADE.
 3. 3/4" S.S. RODS SHALL BE USED IN CONJUNCTION WITH REQUIRED S.S. NUTS. RODS ARE TO BE ATTACH TO FITTINGS WITH EITHER STAR BOLTS OR DUC LUGS.
10" FITTING OR SMALLER = (2) 3/4" S.S. RODS & ASSOC. HARDWARE.
12" FITTING OR LARGER = (4) 3/4" S.S. RODS & ASSOC. HARDWARE.
 4. MIN 2'X2'X3' PRE CAST CONCRETE THRUST BLOCK MAY BE USED WITH P.W.W. APPROVAL OR CONCRETE THRUST BLOCK POURED AGAINST UNDISTURBED EARTH— SIZE TO BE BASED ON THE SIZE FITTING AND PRESSURE IN WATER MAIN. SEE TYPICAL THRUST BLOCK BEHIND FITTINGS INSTALLATION.
 5. SEE MILFORD WATER UTILITES TECHNICAL SPECIFICATION SECTION 01600.C.16.F
 6. ALL MECHANICAL JOINT FITTINGS SEPARATED BY PIPE LENGTH OF 10 FEET OR LESS MUST BE RODDED PER BY AND APPROPRIATE NUMBER OF 3/4" TO 1" DIAMETER STAINLESS STEEL THREADED RODS AND NUT ASSEMBLIES IF SEPARATION IS LESS THAN 10 FEET. IF SEPARATION IS MORE THAN 10 FEET SUBSTITUTE MEGALUGS (OR GRIP RINGS) IN LIEU OF THREADED RODS.

TEE INSTALLATION ON EXISTING MAIN

NOVEMBER 1, 2021
SCALE: NONE

D-1

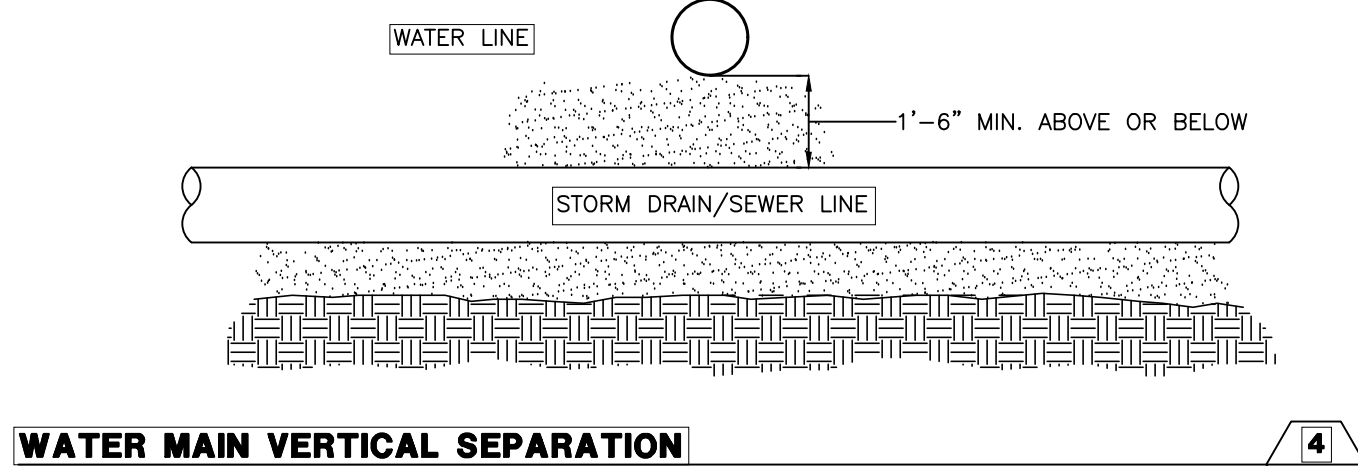


- NOTES:
1. ALL MATERIALS AND INSTALLATION PROCEDURES SHALL CONFORM TO MILFORD WATER UTILITIES SPECIFICATIONS.

LARGE SERVICE AND/OR TAPPING SLEEVE

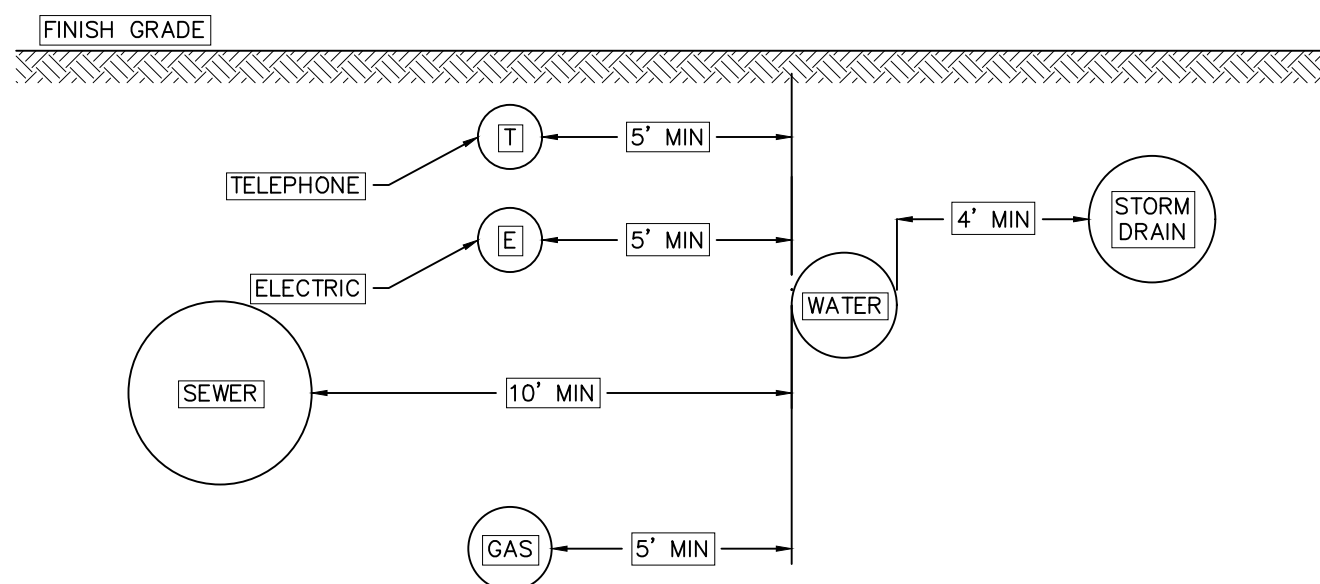
NOVEMBER 1, 2021
SCALE: NONE

D-1



WATER MAIN VERTICAL SEPARATION

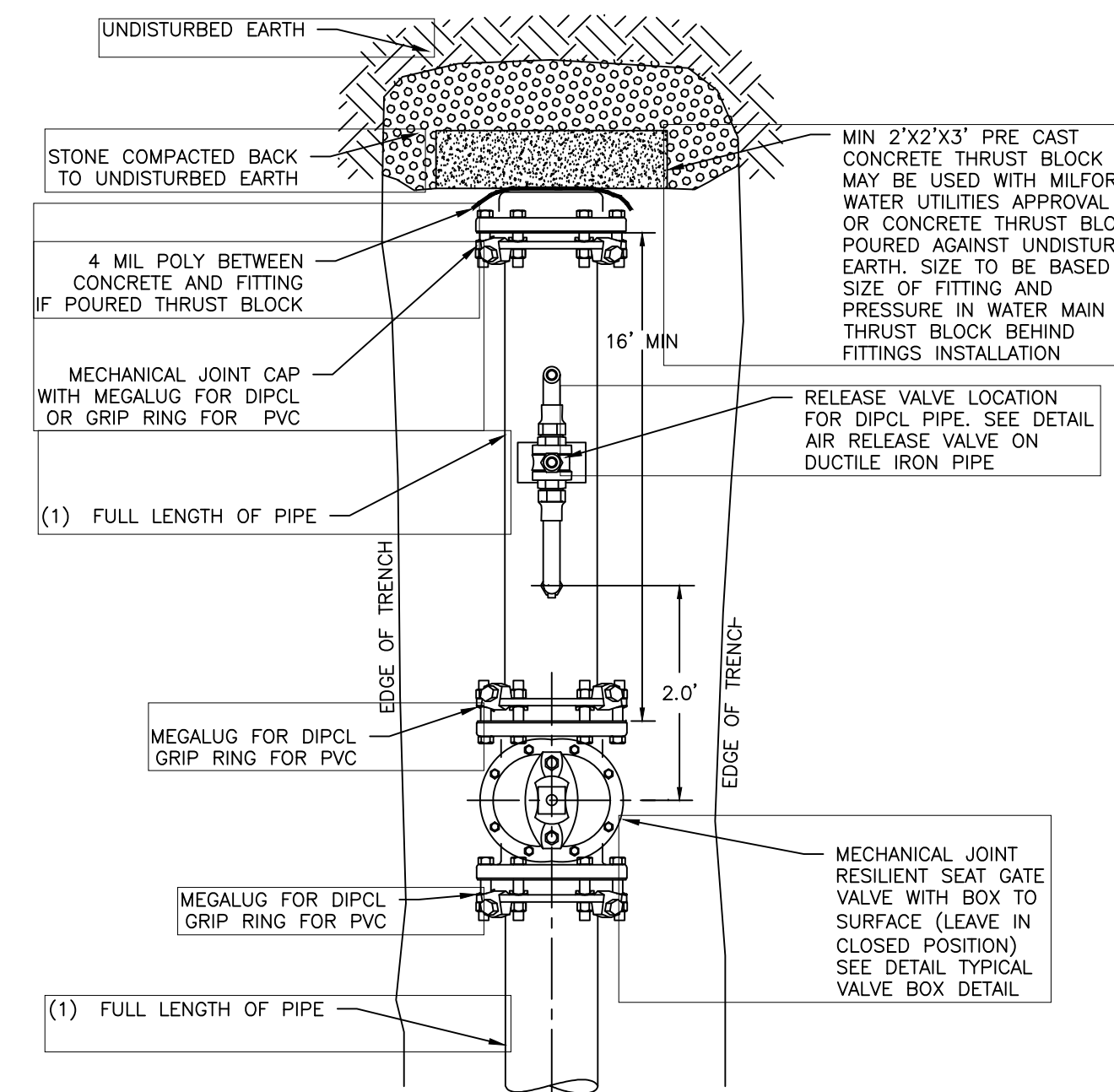
D-1



- NOTES:
1. ALL MATERIALS AND INSTALLATION PROCEDURES SHALL CONFORM TO MILFORD WATER UTILITIES SPECIFICATIONS.
 2. ALL WATER MAIN SHOULD HAVE A MINIMUM DEPTH OF 5' FROM TOP OF PIPE TO FINISH GRADE.
 3. SEE DETAIL 4/D-1 FOR EXACT DEPTH AND LOCATION.

UTILITY TRENCH - HORIZONTAL SEPARATION

D-1

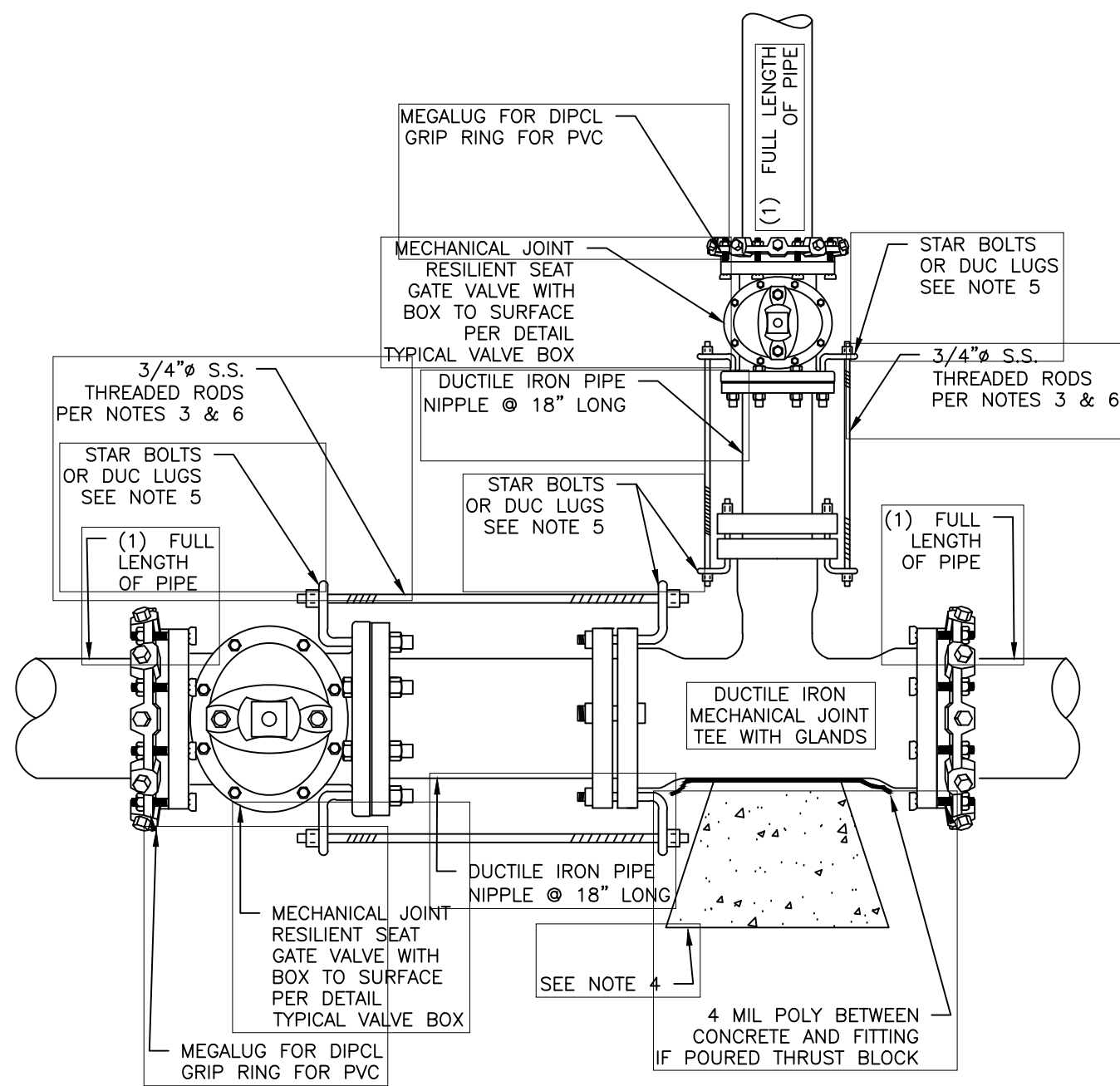


- NOTES:
1. ALL MATERIAL AND INSTALLATION PROCEDURES WILL CONFORM TO MILFORD WATER UTILITIES TECHNICAL SPECIFICATIONS.
 2. ALL PIPE SHOULD HAVE A MINIMUM DEPTH OF 5' FROM TOP OF PIPE TO FINISH GRADE.

END OF MAIN W/ GATE VALVE INSTALLATION

NOVEMBER 1, 2021
SCALE: NONE

D-1

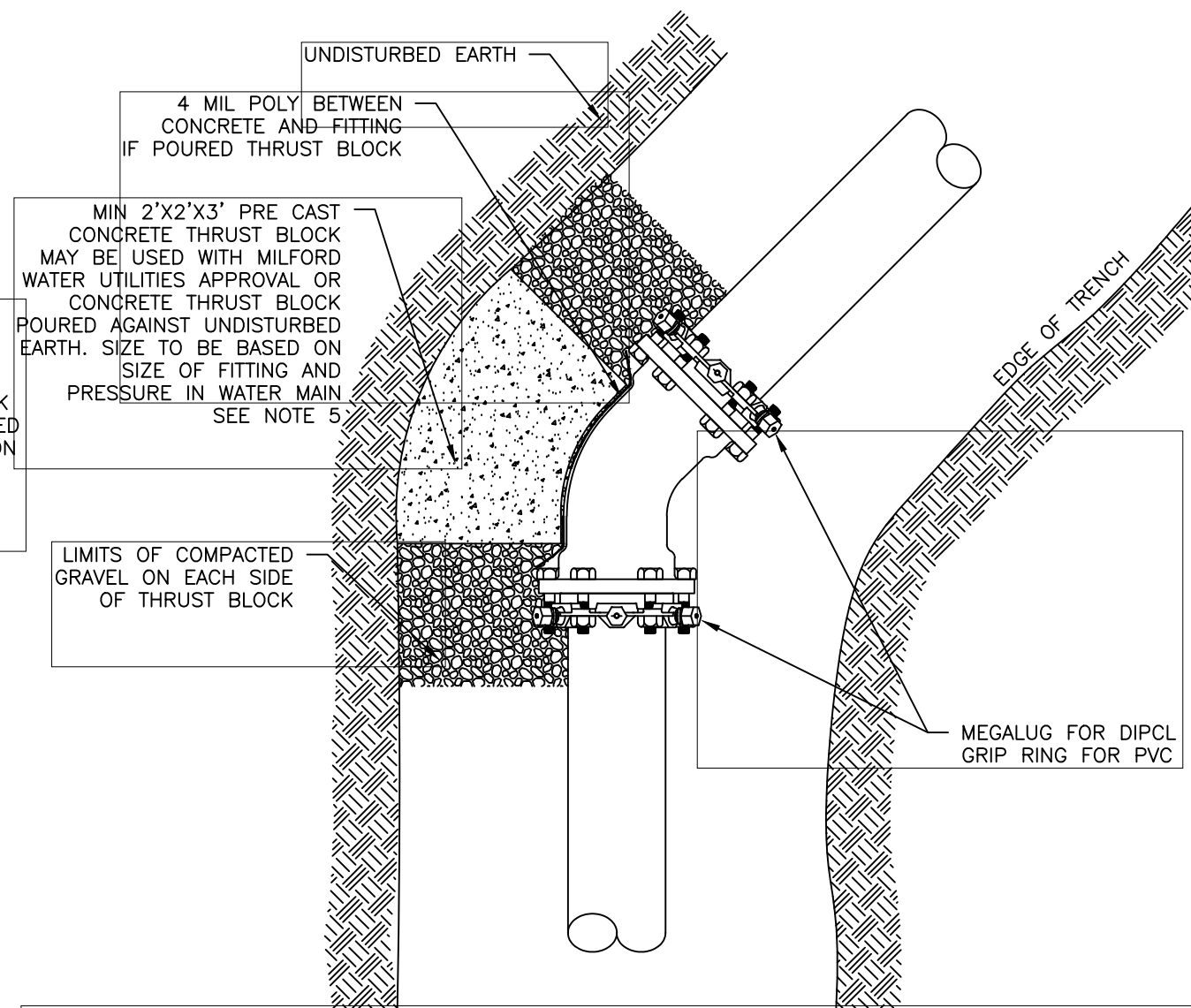


- NOTES:
1. ALL MATERIAL AND INSTALLATION PROCEDURES WILL CONFORM TO P.W.W TECHNICAL SPECIFICATIONS.
 2. ALL PIPE SHOULD HAVE A MINIMUM DEPTH OF 5' FROM TOP OF PIPE TO FINISH GRADE.
 3. 3/4" S.S. RODS SHALL BE USED IN CONJUNCTION WITH REQUIRED S.S. NUTS. RODS ARE TO BE ATTACH TO FITTINGS WITH EITHER STAR BOLTS OR DUC LUGS.
10" FITTING OR SMALLER = (2) 3/4" S.S. RODS & ASSOC. HARDWARE.
12" FITTING OR LARGER = (4) 3/4" S.S. RODS & ASSOC. HARDWARE.
 4. MIN 2'X2'X3' PRE CAST CONCRETE THRUST BLOCK MAY BE USED WITH P.W.W. APPROVAL OR CONCRETE THRUST BLOCK POURED AGAINST UNDISTURBED EARTH— SIZE TO BE BASED ON THE SIZE FITTING AND PRESSURE IN WATER MAIN. TYPICAL THRUST BLOCK BEHIND FITTINGS INSTALLATION.
 5. SEE MILFORD WATER UTILITIES TECHNICAL SPECIFICATION SECTION 01600.C.16.F
 6. ALL MECHANICAL JOINT FITTINGS SEPARATED BY PIPE LENGTH OF 10 FEET OR LESS MUST BE RODDED PER MILFORD WATER UTILITIES TECHNICAL SPECIFICATION SECTION 01600E.2.F IF SEPARATION IS MORE THAN 10 FEET SUBSTITUTE MEGALUGS (OR GRIP RINGS) IN LIEU OF THREADED RODS.

TYPICAL TEE INSTALLATION

NOVEMBER 1, 2021
SCALE: NONE

D-1

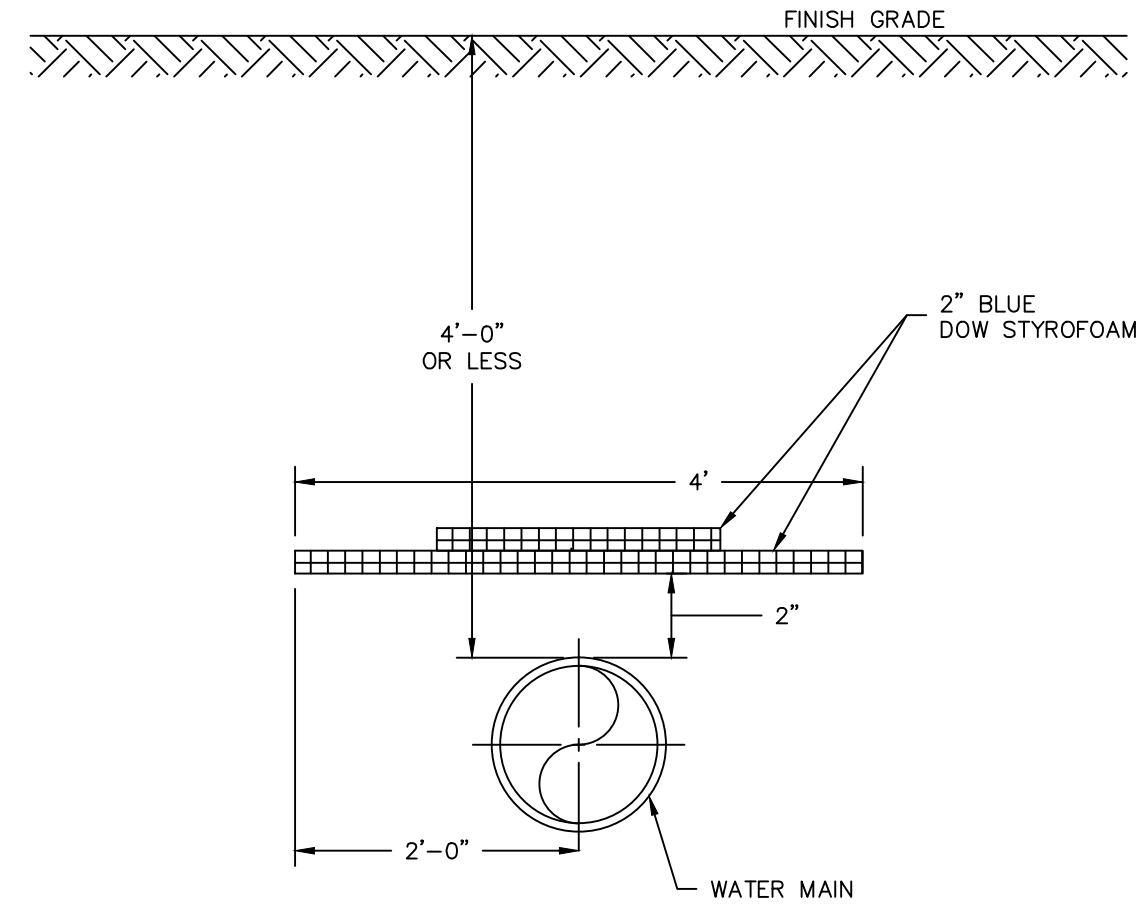


- NOTES:
1. ALL MATERIAL AND INSTALLATION PROCEDURES WILL CONFORM TO MILFORD WATER UTILITIES TECHNICAL SPECIFICATIONS.
 2. ALL PIPE SHOULD HAVE A MINIMUM DEPTH OF 5' FROM TOP OF PIPE TO FINISH GRADE.
 3. 3/4" S.S. RODS SHALL BE USED IN CONJUNCTION WITH REQUIRED S.S. NUTS. RODS ARE TO BE ATTACH TO FITTINGS WITH EITHER STAR BOLTS OR DUC LUGS.
10" FITTING OR SMALLER = (2) 3/4" S.S. RODS & ASSOC. HARDWARE.
12" FITTING OR LARGER = (4) 3/4" S.S. RODS & ASSOC. HARDWARE.
 4. MIN 2'X2'X3' PRE CAST CONCRETE THRUST BLOCK MAY BE USED WITH P.W.W. APPROVAL OR CONCRETE THRUST BLOCK POURED AGAINST UNDISTURBED EARTH— SIZE TO BE BASED ON THE SIZE FITTING AND PRESSURE IN WATER MAIN.
 5. VOID BETWEEN PRECAST THRUST BLOCK AND VIRGIN SOIL TO BE FILLED AND CHINKED WITH STONE.
 6. ALL MECHANICAL JOINT FITTINGS SEPARATED BY PIPE LENGTH OF 10 FEET OR LESS MUST BE RODDED PER BY AND APPROPRIATE NUMBER OF 3/4" TO 1" DIAMETER STAINLESS STEEL THREADED RODS AND NUT ASSEMBLIES IF SEPARATION IS LESS THAN 10 FEET. IF SEPARATION IS MORE THAN 10 FEET SUBSTITUTE MEGALUGS (OR GRIP RINGS) IN LIEU OF THREADED RODS.

THRUST BLOCK BEHIND FITTINGS INSTALLATION

NOVEMBER 1, 2021
SCALE: NONE

D-1

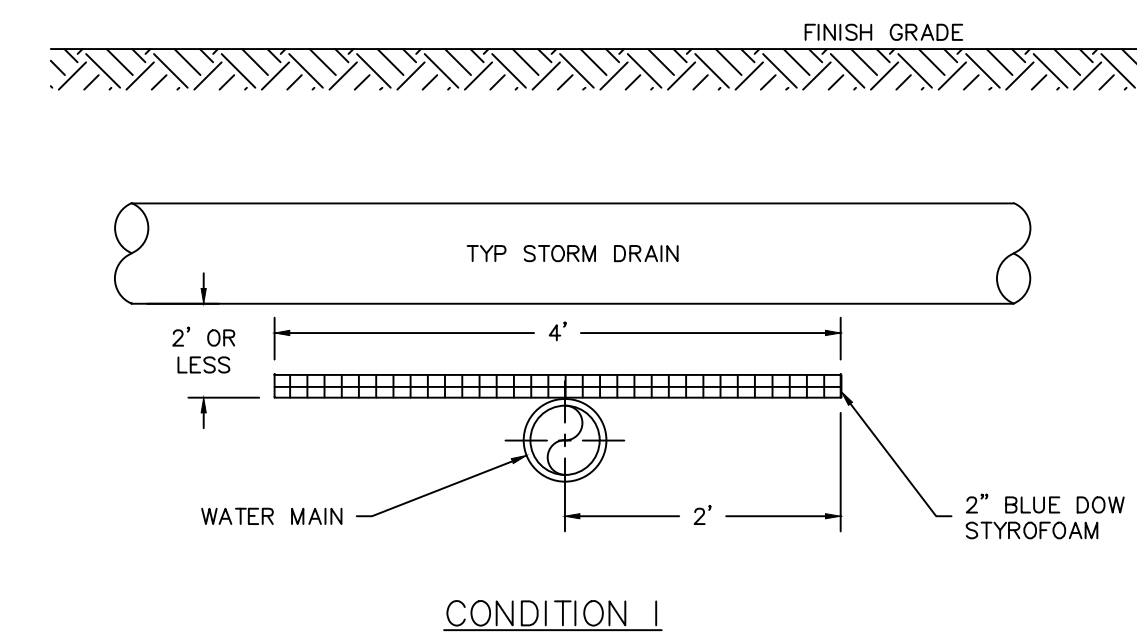


- NOTES:
1. ALL MATERIALS AND INSTALLATION PROCEDURES SHALL CONFORM TO MILFORD WATER UTILITIES SPECIFICATIONS.
 2. MILFORD WATER UTILITIES RESERVES THE RIGHT TO MODIFY INSULATION REQUIREMENTS AS NECESSARY BASED ON FIELD CONDITIONS, ETC.
 3. ALL BUTT JOINT SEAMS TO BE OVERLAPPED WITH 2" PIECE OF INSULATION CENTERED OVER SEAM.

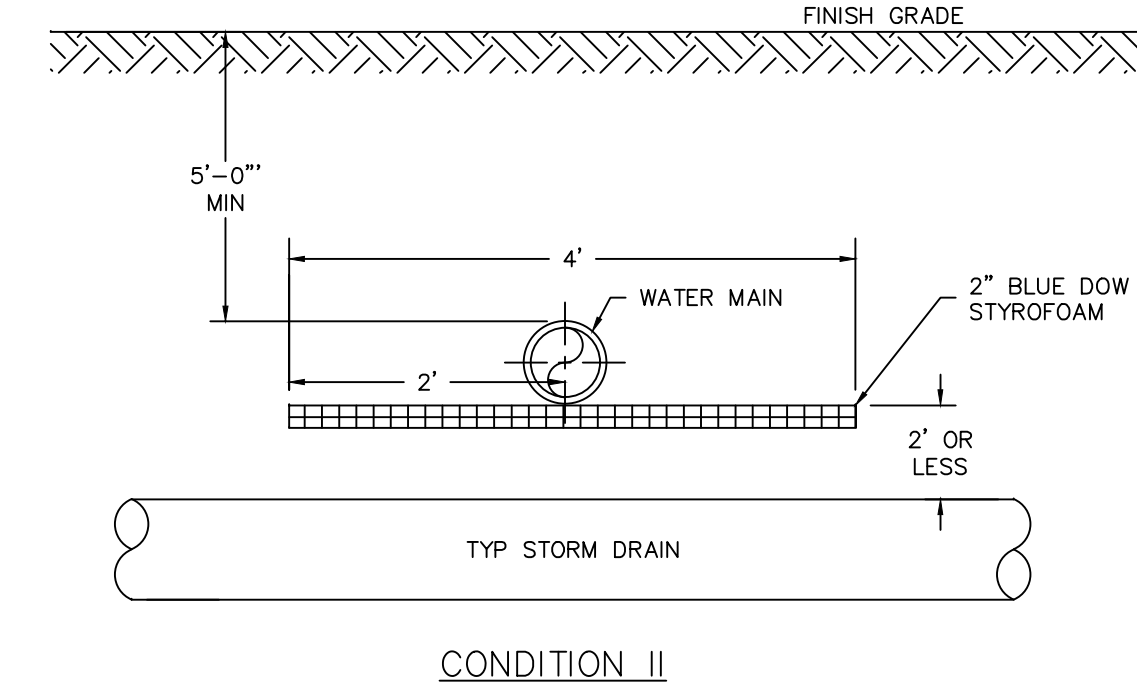
TYPICAL INSULATION FOR LESS THAN 4' OF COVER

NOVEMBER 1, 2021
SCALE: NONE

D-1



CONDITION I



CONDITION II

- NOTES:
1. MILFORD WATER UTILITIES RESERVES THE RIGHT TO MODIFY INSULATION REQUIREMENTS AS NECESSARY BASED ON FIELD CONDITIONS, ETC.
 2. THE LENGTH OR WIDTH OF INSULATION SHALL EXTEND 1 STORM DRAIN PIPE DIAMETER BEYOND THE EDGE OF STORM DRAIN PIPE IN EACH DIRECTION OR A MINIMUM OF 2' BEYOND THE CENTERLINE OF THE STORM DRAIN PIPE, WHICHEVER IS GREATER.
 3. ALL BUTT JOINT SEAMS TO BE OVERLAPPED WITH 1'-0" PIECE OF INSULATION CENTERED OVER SEAM.

STORM DRAIN/WATER MAIN INTERSECTION

NOVEMBER 1, 2021
SCALE: NONE

D-1



WATER UTILITY DETAILS

WILTON PUBLIC LIBRARY
FOREST ROAD
TAX MAP 1 PARCEL 68
WILTON, NEW HAMPSHIRE

D-1
[SHEET]

FILE: 10770U01A.dwg
PROJECT: 10770.01
SHEET NO. 17 OF 10